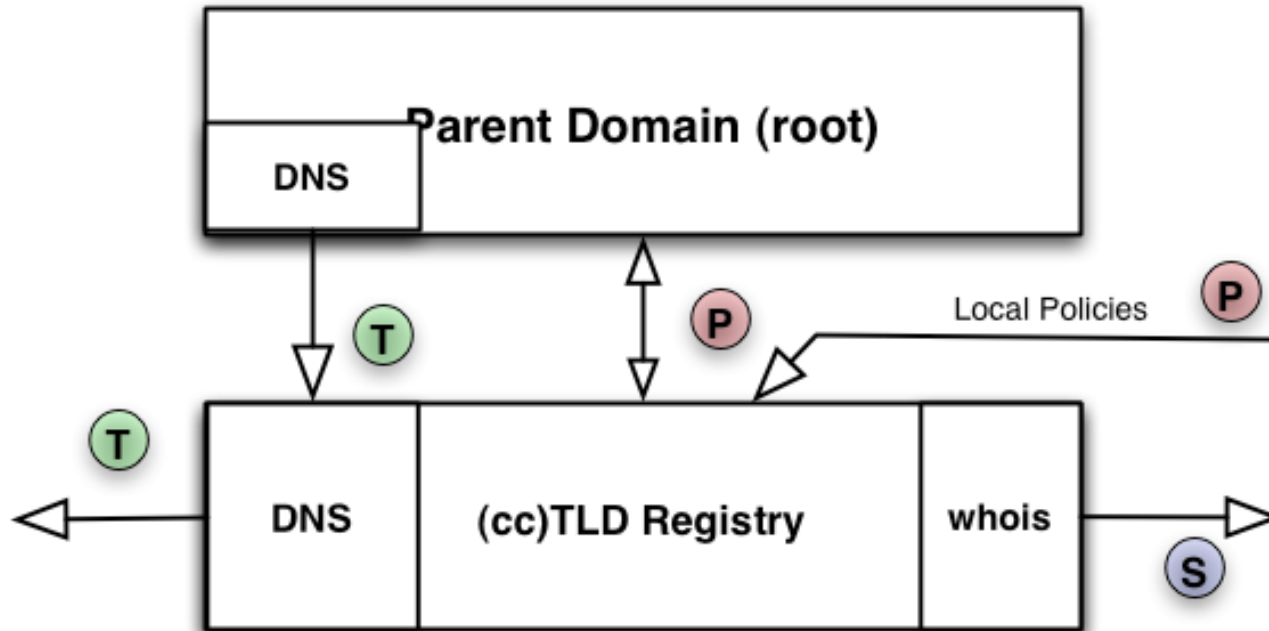


# Registry Functions

Essential components for operating a  
ccTLD registry

# Functions of a Registry

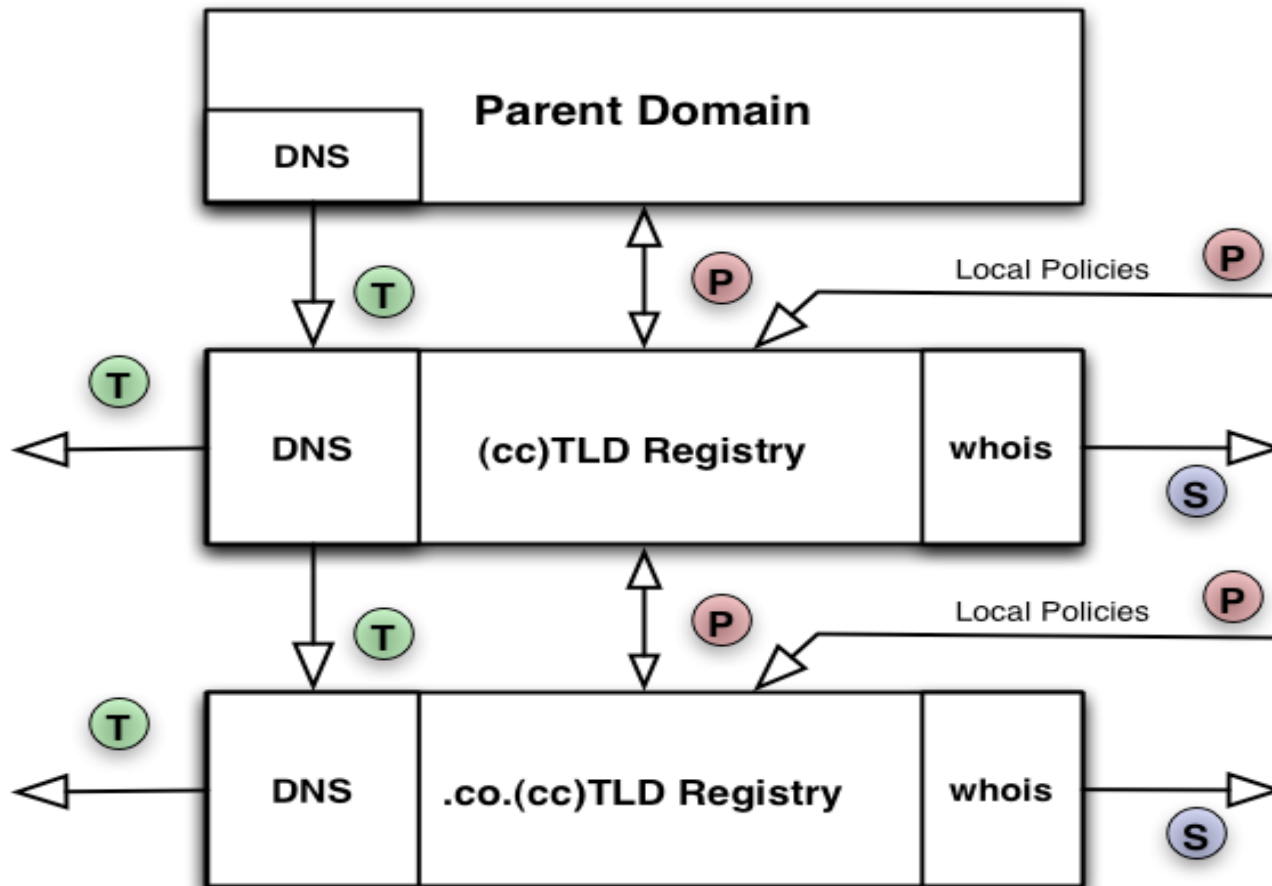


T = technical data (zone content)

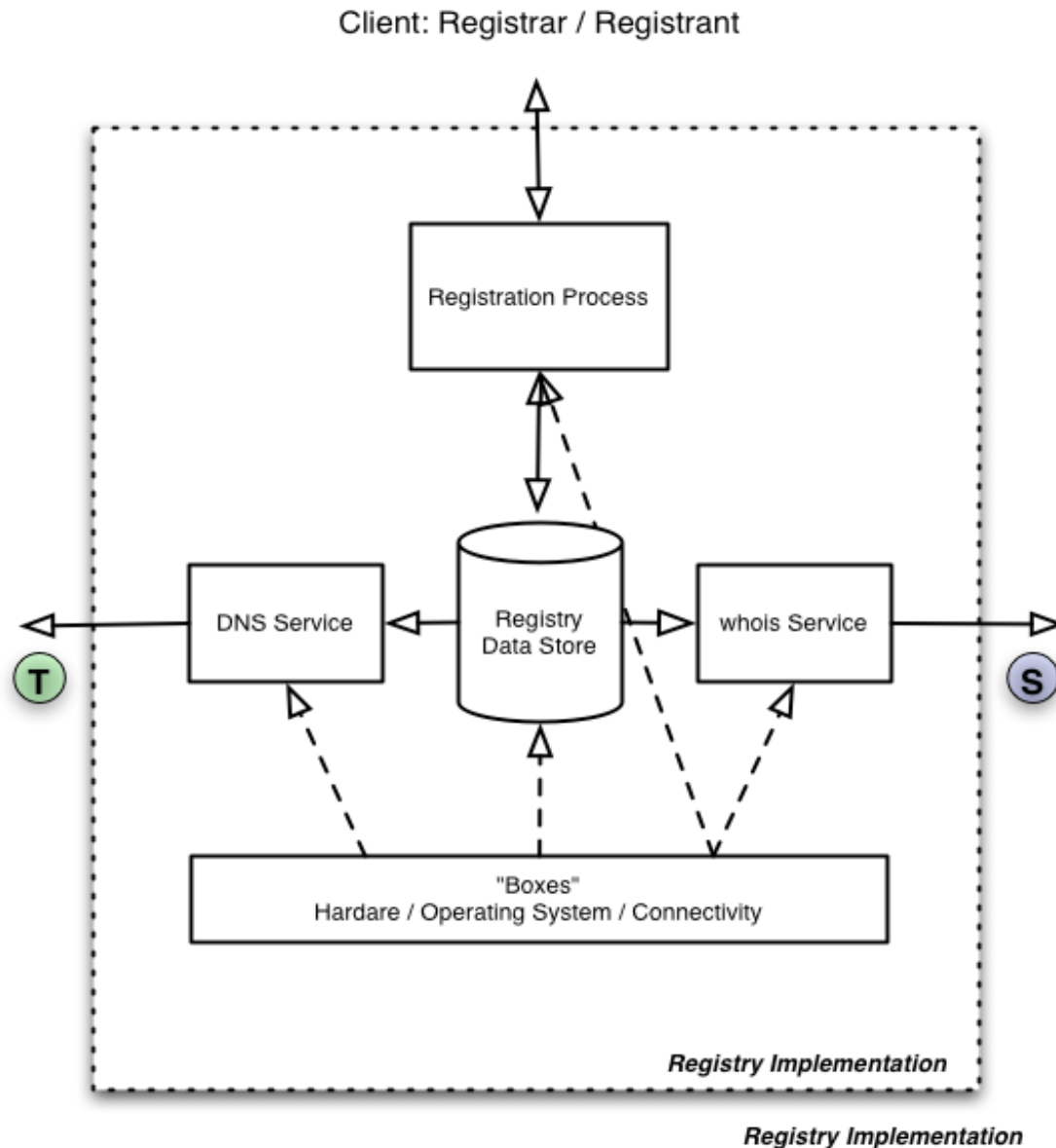
P = policy data (local community policies, IANA policies)

S = social data (contact info, billing data etc.)

# Second Level Domains



# Functions inside a Registry



# Registration Process

- Primary function
  - interface to the client (registrar, registrant)
- Secondary function
  - Enforcement of local policies and regulations, e.g.
    - name valid and unique
    - registration number (if required by government etc.)
  - Billing information
- Methods: Web services, email client, EPP, Fax, phone etc.

# Registry Data Store

- Internal data store
  - Archive of transactions
  - Maintains consistency between the blocks
  - Source for management information, statistics, billing etc.
- Internal social data

# Whois Service

- Public/external data store
  - Classic: port 43
  - Via web interface
  - New: Crisp
- Implementation of local privacy rules
- Public social data

# DNS Service

- DNS & BIND
- Authoritative DNS
- Primary/secondary
- Caching DNS as service (optional)
- Reverse DNS (pointer to RIR's)



# Technical Infrastructure

- Hardware
- Connectivity, Routing
- Operating System
- Editor, scripts
- Registration Tools