

BULA VINAKA

Network Presentation
by

Taniela Sikivou & Filipe Gauna



- **100% owned by the Government of Fiji**
- **3 Offices in Viti Levu**
 - **CCS Office in Suva City**
 - **CCS Office in Nadi**
 - **Cable Station @ Vatuwaqa, Suva**
- **Currently employs 33 Staff**

1. Connectivity

- ❖ Regional Carriers
- ❖ Local Carriers
- ❖ Corporate / ISPs

2. Internet Private Lease

3. Ethernet Private Lease

4. Data

5. ISP - Kidanet

RECENT DEVELOPMENTS

1. Savusavu Cable Station

- ✓ Construction to be completed by July 12th, 2018

2. Regional Cables

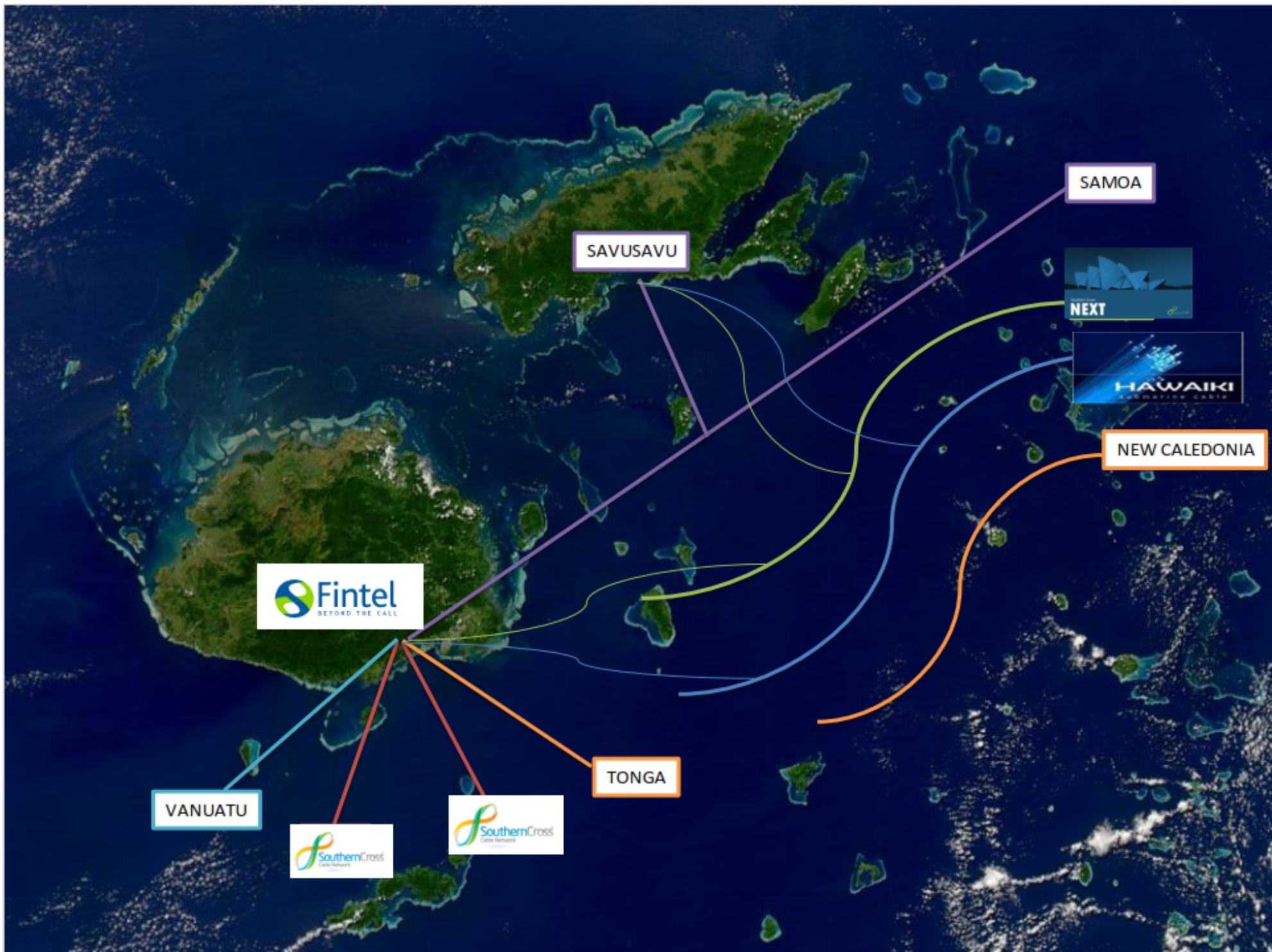
- ✓ Tonga - completed
- ✓ Vanuatu - completed
- ✓ Samoa - completed
- ✓ New Caledonia - pending

3. Upcoming Cable Systems:

- ✓ SX Next
- ✓ Hawaiki

- **SX NEXT** – expected to go live in 2019
 - ❖ FIJI
 - ❖ Australia
 - ❖ New Zealand
 - ❖ US
 - ❖ Other Pacific Islands (TBC)

- **HAWAIKI Cable** - completed
 - ❖ Australia
 - ❖ New Zealand
 - ❖ Hawaii
 - ❖ US mainland
 - ❖ American Samoa
 - ❖ Fiji, Tonga, New Caledonia – still pending





REGIONAL CABLES – 2016/18

PACIFIC TELECOMMUNICATIONS HUB



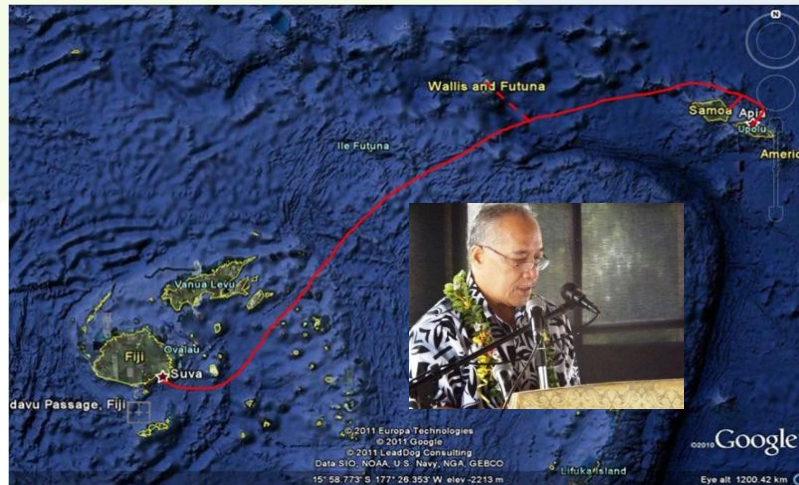
**FIJI-VANUATU
USD\$40M**



**FIJI-TONGA
USD\$35M**



**FIJI-SAMOA
USD\$49M
(Savusavu)**



SAVUSAVU CABLE STATION



KIDANET ISP

KIDANET

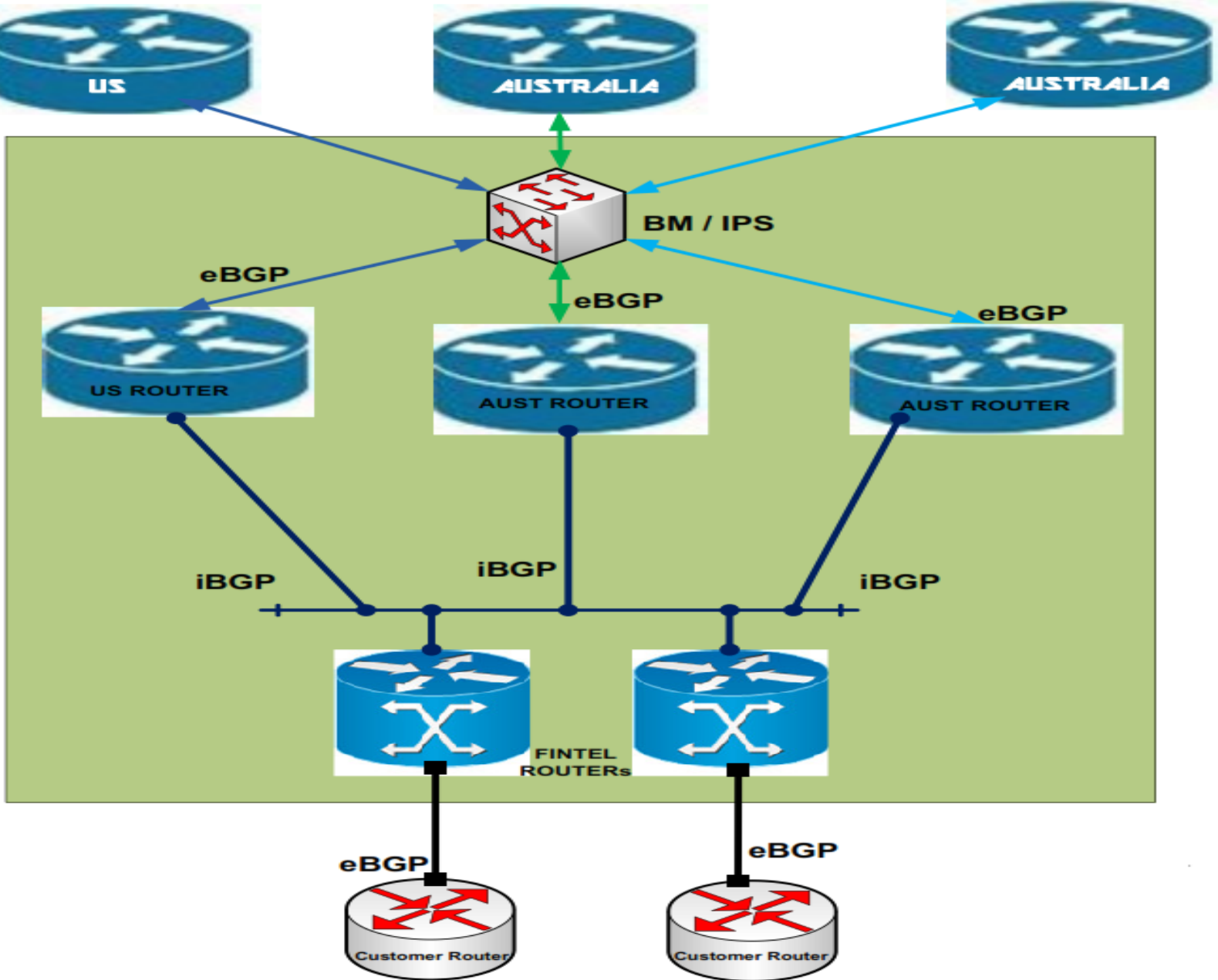
- KIDANET started its operation in 2007 and is the ISP retail arm of FINTEL.
- We have a customer base of around 2000 small scale. (Mainly are Corporate Customers)
- We operate on a Point to Point (PtP) and Point to MultiPoint's (PtMP) wireless platform.
- We also have a few customers who are running on Fibre in using Telecom's Fiji Fibre platform
- We use WiMAX, Air- Mux 200, Air-Mux 400, Air-Mux 5000 broadband wireless
- Some of our Core Corporate Customers are Fiji National University (FNU), Bank of South Pacific, Government Ministries.
- Some challenges that we face are stiff competition from other ISP's in terms of speed, pricing, resources etc
- We are looking into expanding our network and plans are in place to uplift the service provided to our customer





INTERNET SERVICES

INTERNET SERVICES



CHALLENGES

1. Resiliency

2. Redundancy

3. Infrastructure



THANK YOU !!