

Solomon Telekom Ltd – ISP

Country Report

Farhad James & Prudence E'eman



Outline

- **ISP Update - Solomon Telekom Ltd + Challenges**
- **Brief Look at some of our Business Solutions(IPVPN&RACKSpace Rental)**
- **Electronic Topup Highlight**
- **Getting ready for the Future**



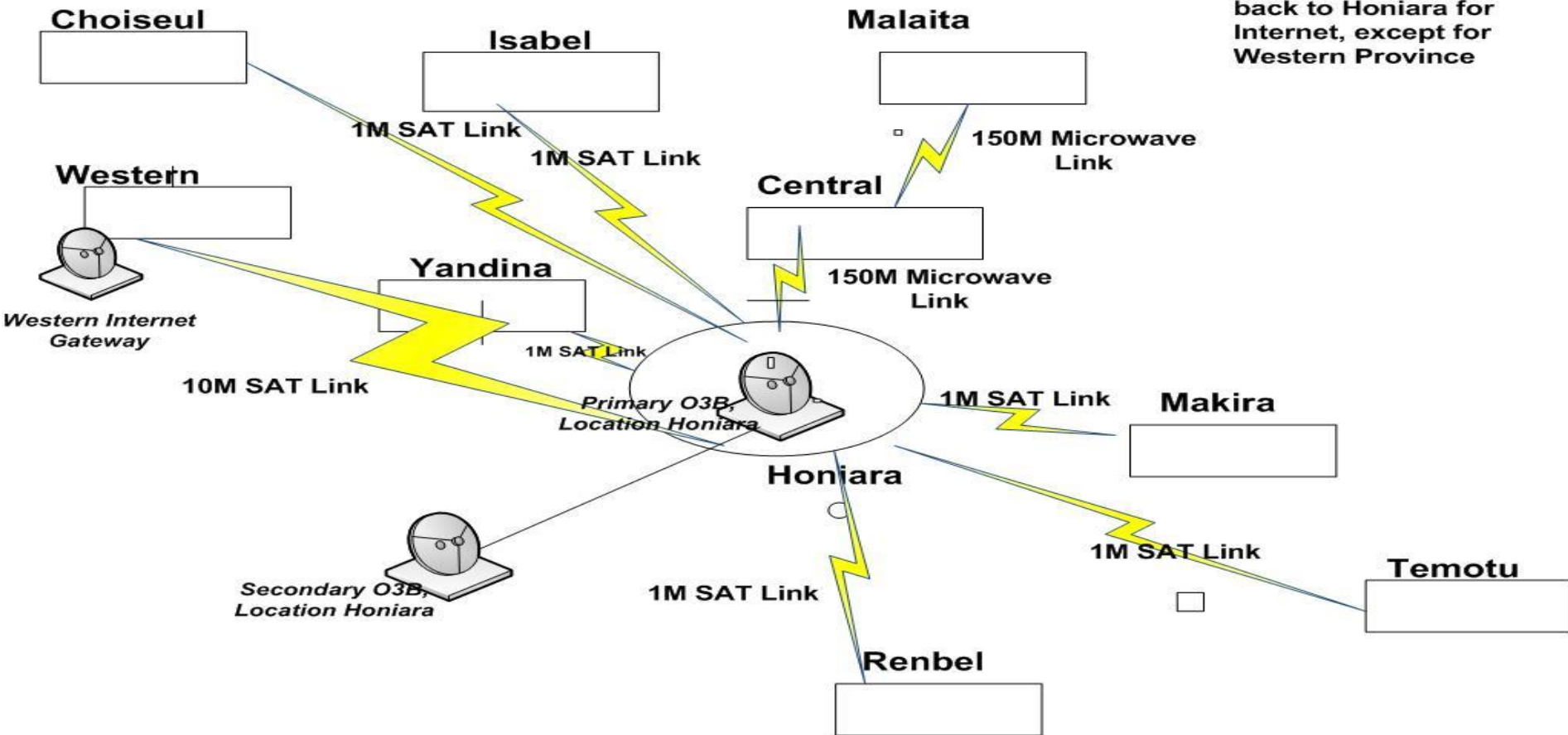
The Happy Isles

Major Challenge!

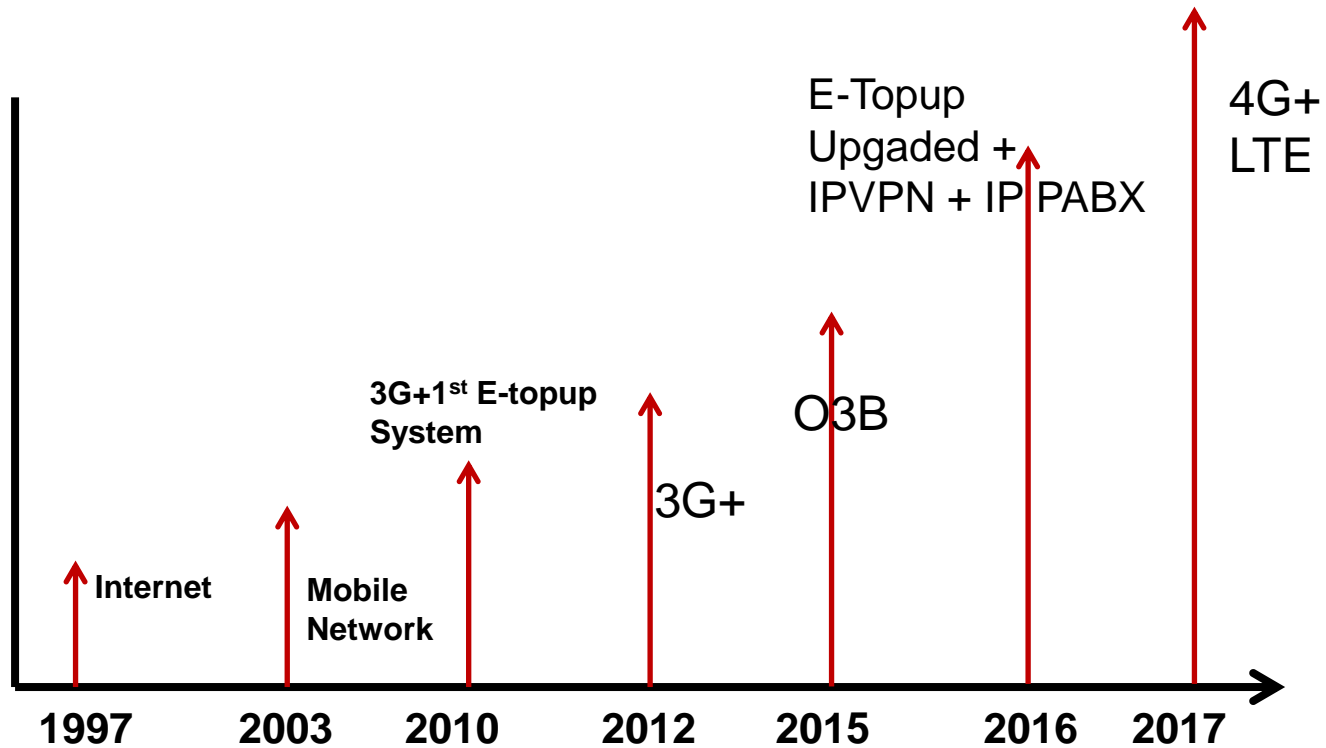


Brief Insight to where we at!

- Shared Links – Corporate/ Mobile/Broadband Internet
- All Islands connected back to Honiara for Internet, except for Western Province



Pathway to a World Class Telecommunication



Some Major Developments/Services

- 2017 – 2018, some Provinces and Islands upgraded from 2G to 3G
- 2017 – 2018, Introduced DR/RACK Rental for Customers

IPVPN

DR/RACKSpace Rental Solution

Why?Electronic Topup System



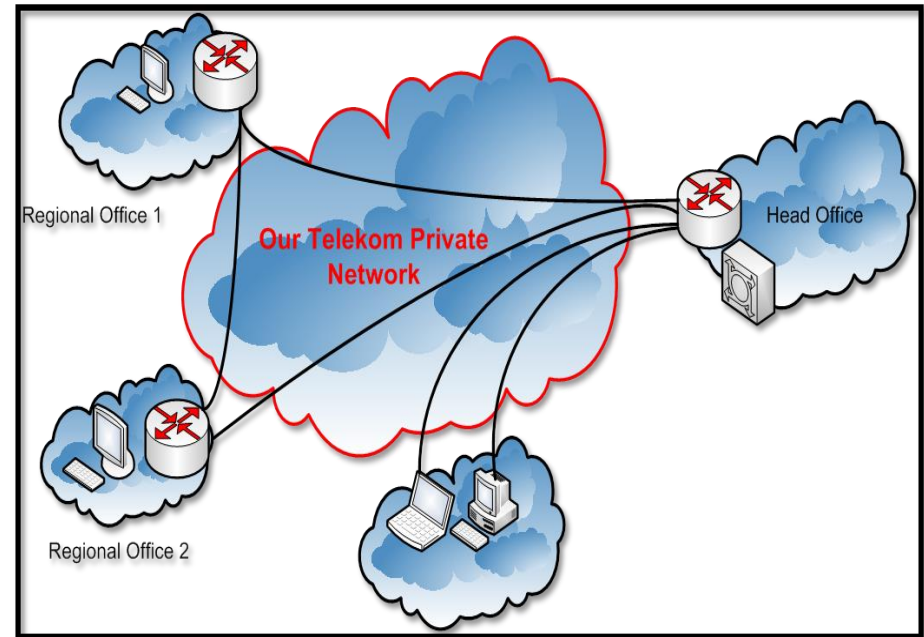
TM



Our Business Solutions

IPVPN – ??

- Your own secure private virtual network carried nationally over dedicated Our Telekom infrastructure
- Simplifies your ICT task as if your offices were in adjacent rooms
- Our Telekom Edge Router at each customer site with CAT 6 connection to customer network
- Our Telekom can use Copper, Fibre, microwave and even VSAT for delivery of IP-VPN
- Offer a Flexible range of bandwidth between each site



DR/Rack Rental

- **ICT plays very important roles in all Businesses today**
- **Business Continuity is now the focus and very important in Businesses today, therefore;**
- **Solomon Telekom is now offering a DR solution**
- **RackSpace/Power/Cooling Provided**
- **Connected from your Pri Site via IPVPN - secure**





Electronic Topup System Why?

Mobile Coverage Vs Topup Service Delivery



Mobile Coverage Vs Topup Service Delivery

- Solomon Telekom has reached all of the islands.
- Geography of the islands + Poor Road Infrastructure + Expensive Transportation + Security are major challenges for Topup Service delivery to all our Coverage
- Call Come!!!
- Big Investment on E-Topup Service Platform



Mobile Coverage Vs Topup Service Delivery

- 2010 – We deployed MoreMagic E-Topup System
- From 2010 – 2017, vast coverage expansion carried out
- 2016 – Upgraded our E-Topup System to Huawei EVC
- Solomon Telekom Ltd spent more than SBD5M in this upgrade project



Despite Challenges! Getting Ready for the Future

- 2017 – 2018 Core Mobile Network Upgrade Started
- >SBD3M Project
- Upgrading core network equipment ready for submarine cable
- All equipment IPv6 capable
- Planned New Datacenters in Honiara and Western Province
- Newly created to overseas the overall network security
- adopting the ISO/IEC 27002 and ISO/IEC 27011 as basis for its framework(main keys)



TM



THANK YOU